

Company	Phone
Address	Mobile (of the contact person)
ZIP Code; City	Fax
Country	E-mail
Contact person	VAT no. / Registration no.

Order by fax:
E-mail:

+40 21 207 70 70
expoflowers@romexpo.ro

ORDER: RENTING ELECTRICAL INSTALLATIONS

We order according with the items checked below and, we also accept the Special Conditions in the Application Contract and the General & Technical Conditions of the Fairs and Exhibitions organized within ROMEXPO Exhibition Centre.

Code	Quantity	Description	Tariff (EURO)
Electrical equipment - Stand built with ROMEXPO			
019 010 180 000	<input type="checkbox"/>	Arm spotlight	12
019 010 181 000	<input type="checkbox"/>	Arm spotlight 100W	12
019 010 187 000	<input type="checkbox"/>	Connecting spotlight OCTANORM	12
019 010 200 008	<input type="checkbox"/>	Spotlight SS30 100W	12
019 010 188 000	<input type="checkbox"/>	Spotlight 100W	12
019 010 170 000	<input type="checkbox"/>	Spotlight 100W	12
019 010 185 000	<input type="checkbox"/>	Halogen spotlight SY STAR 100W	15
019 010 186 000	<input type="checkbox"/>	Halogen spotlight SY STAR 50W(A)	15
019 010 200 010	<input type="checkbox"/>	Arm reflector 300W	35
019 010 200 006	<input type="checkbox"/>	Halogen reflector SYMA STAR 300W	35
019 010 200 005	<input type="checkbox"/>	IVEN HQI 150W reflector	35
019 010 390 000	<input type="checkbox"/>	HIGHLITE HQI 150W reflector	35
019 010 200 030	<input type="checkbox"/>	HQI 80W reflector	35
019 010 200 020	<input type="checkbox"/>	PAR64 500-1000W reflector	40
019 010 200 040	<input type="checkbox"/>	Arm reflector LED A++ 16W 1100LM 4000K	35
019 010 200 045	<input type="checkbox"/>	LED VIRGO reflector 40W 4350 LM 4100K	40
019 010 110 000	<input type="checkbox"/>	Fluorescent lamp FIA with complete electric installation 1x40W	15
019 010 190 001	<input type="checkbox"/>	Fluorescent lighting SS30 type with D-170-A tube	18
019 010 190 000	<input type="checkbox"/>	Fluorescent lighting SS30 type with D-170 tube	15
019 010 200 001	<input type="checkbox"/>	Fluorescent lighting SYMA STAR type	18
019 010 200 000	<input type="checkbox"/>	Fluorescent lighting OCTANORM type with double-tube D-171	20
019 010 265 000	<input type="checkbox"/>	Electrical panel 380V/220V - electric board, 7 single phase circuits (without electric branching) - inside / outside*)	100
019 010 275 000	<input type="checkbox"/>	Electrical panel OCTANORM - electric board, 8 single phase circuits (without electric branching) - inside / outside*)	120
019 010 279 000	<input type="checkbox"/>	Extension cable 230V, 10A, 5m	10
019 010 277 000	<input type="checkbox"/>	Extension cable 230V, 10A, 3m	10
*)Please check the necessary electric branching too			
Electrical equipment - for any kind of stand			
025 010 070 010	<input type="checkbox"/>	Cooler 140 l (55x61x84 cm)	24
025 010 120 010	<input type="checkbox"/>	Coffee filter	4
025 010 130 030	<input type="checkbox"/>	DVD Player	40
025 010 130 040	<input type="checkbox"/>	Plasma display TV (diagonal screen: 107 cm)	25/day
025 010 130 045	<input type="checkbox"/>	TV LED SMART 4K, UHD ultrathin (diagonal screen: 126 cm)	40/day
025 010 500 020	<input type="checkbox"/>	Standing fan	7
025 010 020 198	<input type="checkbox"/>	Refrigerator Arctic FB 155	25
025 010 020 199	<input type="checkbox"/>	Refrigerator Arctic 255 l	55
025 010 070 020	<input type="checkbox"/>	Refrigerator ARCTIC 180 l	44

Code	Quantity	Description	Tariff (EURO)
Electrical installations			
019 010 210 000	<input type="text"/>	Single phase power branching, including 1 single phase plug 2P+E 230V, 50 Hz (PI<=1,5 KW) - inside	20
019 010 210 010	<input type="text"/>	Single phase power branching, including 1 single phase plug 2P+E 230V, 50 Hz (PI<=1,5 KW) - outside	20
019 010 010 000	<input type="text"/>	Single phase power branching, including 1 single phase plug 2P+E 230V, 50 Hz (PI<=2,5 KW) - inside	30
019 010 010 010	<input type="text"/>	Single phase power branching, including 1 single phase plug 2P+E 230V, 50 Hz (PI<=2,5 KW) - outside	30
019 010 020 005	<input type="text"/>	Three phase power supply, including 1 three-phase socket CEE 16 A 5p 400V, consumption and checking installation (PI<= 5,0 KW) - inside	100
019 010 020 006	<input type="text"/>	Three phase power supply, including 1 three-phase socket CEE 16 A 5p 400V, consumption and checking installation (PI<= 5,0 KW) - outside	150
019 010 030 005	<input type="text"/>	Three phase power supply, including 1 three-phase socket CEE 16 A 5p 400V, consumption and checking installation (PI<=8,0 KW) - inside	115
019 010 030 006	<input type="text"/>	Three phase power supply, including 1 three-phase socket CEE 16 A 5p 400V, consumption and checking installation (PI<=8,0 KW) - outside	165
019 010 050 005	<input type="text"/>	Three phase power supply, including 1 three-phase socket CEE 32 A 5p 400 V, consumption and checking installation (PI<=10,0 KW) - inside	210
019 010 050 006	<input type="text"/>	Three phase power supply, including 1 three-phase socket CEE 32 A 5p 400 V, consumption and checking installation (PI<=10,0 KW) - outside	260
019 010 055 005	<input type="text"/>	Three phase power supply, including 1 three-phase socket CEE 32 A 5p 400 V, consumption and checking installation (PI<=18,0 KW) - inside	350
019 010 055 006	<input type="text"/>	Three phase power supply, including 1 three-phase socket CEE 32 A 5p 400 V, consumption and checking installation (PI<=18,0 KW) - outside	400
019 010 055 025	<input type="text"/>	Three phase power supply, including 1 three-phase socket CEE 63 A 5p 400 V, consumption and checking installation (PI<=34,0 KW) - inside	445
019 010 055 026	<input type="text"/>	Three phase power supply, including 1 three-phase socket CEE 63 A 5p 400 V, consumption and checking installation (PI<=34,0 KW) - outside	495
019 010 055 045	<input type="text"/>	Three phase power supply, including 1 three-phase socket CEE 125 A 5p 400 V, consumption and checking installation (PI<=50,0 KW) - inside	550
019 010 055 046	<input type="text"/>	Three phase power supply, including 1 three-phase socket CEE 125 A 5p 400 V, consumption and checking installation (PI<=50,0 KW) - outside	600

To all tariffs VAT should be added.

Delivery date:

(fill in only for services which are ordered before starting the stand's mounting)

Order date

City

Exhibitor stamp and signature



Arm spotlight EUR 12.00
Code 019.010.180.000



Arm spotlight 100W EUR 12.00
Code 019.010.181.000



Connecting spotlight OCTANORM EUR 12.00
Code 019.010.187.000



Spotlight SS30 100W EUR 12.00
Code 019.010.200.008



Spotlight 100W EUR 12.00
Code 019.010.188.000



Spotlight 100W EUR 12.00
Code 019.010.170.000



Halogen spotlight SY STAR 100W EUR 15.00
Code 019.010.185.000



Halogen spotlight SY STAR 50W(A) EUR 15.00
Code 019.010.186.000



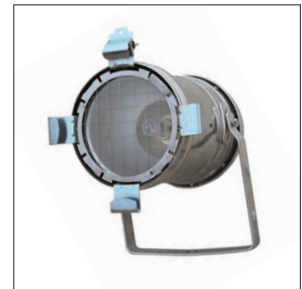
Arm reflector 300W EUR 35.00
Code 019.010.200.010



Halogen reflector SYMA STAR 300W EUR 35.00
Code 019.010.200.006



IVEN HQI 150W reflector EUR 35.00
Code 019.010.200.005



HIGHLIGHT HQI 150W reflector EUR 35.00
Code 019.010.390.000



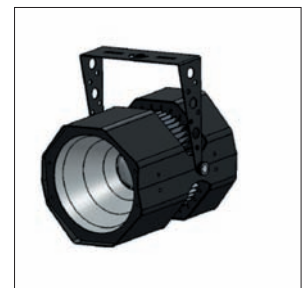
HQI 80W reflector EUR 35.00
Code 019.010.200.030



PAR64 500-1000W reflector EUR 40.00
Code 019.010.200.020



Arm reflector LED A++ 16W 1100LM 4000K EUR 35.00
Code 019.010.200.040



LED VIRGO reflector 40W 4350 LM 4100 K EUR 40.00
Code 019.010.200.045

RENTING ELECTRICAL EQUIPMENT

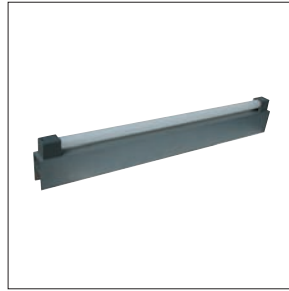
S6/5



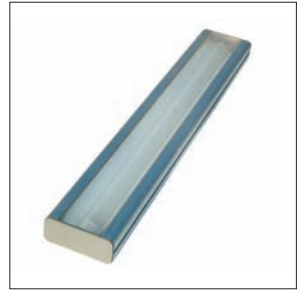
Fluorescent lamp FIA with complete electric installation 1x40W
Code 019.010.110.000
EUR 15.00



Fluorescent lighting SS30 type with D-170-A tube
Code 019.010.190.001
EUR 18.00



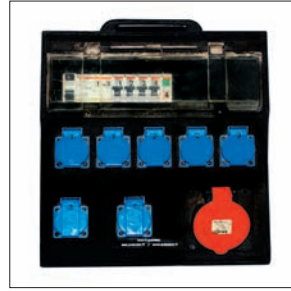
Fluorescent lighting SS30 type with D-170 tube
Code 019.010.190.000
EUR 15.00



Fluorescent lighting SYMA STAR type
Code 019.010.200.001
EUR 18.00



Fluorescent lighting OCTANORM type with double-tube D-171
Code 019.010.200.000
EUR 20.00



Electrical panel 380V/220V
Code 019.010.265.000
EUR 100.00



Electrical panel OCTANORM
Code 019.010.275.000
EUR 120.00



Extension cable 230V, 10A, 5m
Code 019.010.279.000
EUR 10.00



Extension cable 230V, 10A, 3m
Code 019.010.277.000
EUR 10.00



Standing fan
Code 025.010.500.020
EUR 7.00



Coffee maker
Code 025.010.120.010
EUR 4.00



DVD Player
Code 025 010 130 030
EUR 40.00



Plasma TV (diagonal screen: 107 cm)
Code 025 010 130 040
EUR 25.00/day



TV LED SMART 4K, UHD ultrathin (diagonal screen: 126 cm)
Code 025 010 130 045
EUR 40.00/day



Cooler (140 l)
Code 025.010.070.015 (55 x 61 x 84 cm)
EUR 24.00



Refrigerator ARCTIC (180 l)
Code 025 010 070 020
EUR 44.00



Refrigerator ARCTIC 255 l
Code 025 010 020 199
EUR 55.00



Refrigerator ARCTIC FB 155
Code 025 010 020 198
EUR 25.00

To all tariffs VAT should be added